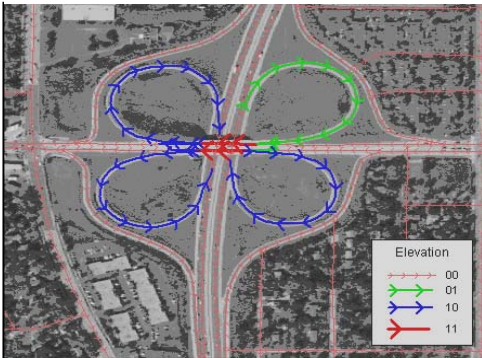


Street Realignment and Conflation

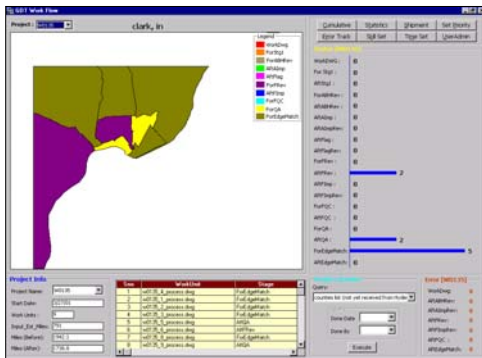
Updated realigned data delivered to client



Complex freeways and street networks



Complex freeways and street networks



Client

The client is a leading US digital street map database company, providing location-based applications, including in-car navigation, Internet services, wireless services, Automated Vehicle Location (AVL) services, and call-center services.

Business Need

The client identified an opportunity to build its market share by entering the growing car navigation systems and location-based services (LBS) markets. To compete effectively, the client needed to:

- Significantly enhance the positional accuracy and attributes of its US vector database offering
- Dramatically increase its human resource capacity to handle the huge volumes of data
- Achieve high levels of process efficiency to complete the project within its budget and within a limited timeframe

Solution

Developing the solution involved:

- Quick recruitment and training of the project team, growing from 40 members to 250 members at the project peak
- Design of a rigorous process, consisting of nearly 100 predefined sequential steps, to enable effective process flows
- Development of several smart process automation applications, including a Work Allocation System (WAS) and a Workflow Management System (WMS) to generate manageable work units and closely manage the project, and algorithmic Quality Assurance (QA) programs to enable rigorous checking and deliver consistent output quality

Benefits

- Timely availability of updated, consistent quality datasets, enhancing the client's capacity and process efficiency
- The client was able to position itself as a premier player in the larger North America LBS market
- Full visibility of project progress for both the client and RMSI teams thanks to RMSI's WMS
- Using RMSI's skilled manpower enabled the client to avoid making significant internal investments in high cost resource
- High levels of operational transparency, building a strong base on which to develop the client relationship
- Faster, more consistent data processing, and quality and pre-shipment checking, due to automated applications and algorithmic QA checks
- Considerable efficiency improvements due to integrated processes

Technologies

- AutoCAD Map 4; Arc GIS 8.x, Arc View 3.2; MapInfo 5.5
- Erdas Imagine
- Visual Basic; Visual C++; SSQL