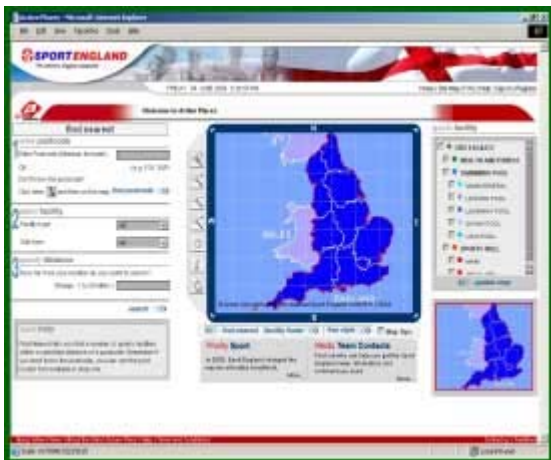


Web-Enabled Facility Information System

Prelogin Page For Active Places



Post Login Public User With Find Nearest



Display of UK Administrative Boundaries



Client

A UK government organization, responsible for managing various government schemes relating to the promotion of sports activities across the country.

Business Need

The client wished to consolidate all existing information on sports facilities in England. This had been maintained by separate sporting organizations and suffered from inconsistent information, varying in quality and accuracy, and produced in different formats. The client decided to create a single authoritative database of sports facilities in England, to be called Active Places.

Active Places would allow auditing of existing sports facilities, identification of gaps, requirement prioritization, and finally enable uniform information dissemination.

Solution

Developing the solution involved three main stages::

Active Places Development

- Designing a robust and reliable system, with a user friendly interface, and the ability to do complex attribute based searches
- Incorporation of tools for selection, analysis, and presentation of spatial data for different types of users

Data Model Development

- Research of existing datasets from multiple sources and an in-depth review of user requirements

Data Matching and Synchronization

- Automatic data matching via a customized software application, and manual data cleansing, using an interactive software application
- Data correction, using local knowledge and reference data sets, with manual and automated quality checks

Benefits

- Creation of one 'master' register holding 'high interest' core information on all sports facilities in England
- Creation of a single source of current information, with all relevant organizations agreeing to supply this
- Ability for all interested organizations to obtain updated copies of the master register, or subsets of it
- Ability for the public and organizations to directly query and view sports facility information in map and text form
- Definition, publication, and promotion of a sports data model, providing standard definitions for data items
- Use of load balancing to route traffic to available web servers ensures continued access to the application

Technologies

- Microsoft SQL server 2000 Enterprise Edition (Service pack 3); Microsoft Internet Information Server 5.0
- ArcSDE 8.3, ArcIMS 4.0.1 Application Server, ArcIMS 4.0.1 Spatial Server
- Microsoft Visual Studio 6; Microsoft XML 3.0