

The logo for RMSI (Research & Machine Learning Solutions Institute) features the letters 'RMSI' in a bold, white, sans-serif font on a dark green rectangular background.

# Annotation & Labeling

## *Enterprise Grade Training Data for AI*

Combining cutting-edge technology with humans-in-the-loop to speed up the development of highly accurate and scalable AI/ML models



RMSI has over two decades of experience in providing enterprise-grade custom annotation & labeling services. We address your training data needs with automated tools human annotators to reduce curation fallouts, and a powerful workflow driven AI enabled platform.

We enrich, and custom annotate data to meet various industry requirements and help train your AI models on time and to budget. From image labeling to creating high-quality datasets for Machine Learning, we help gain actionable insights from various unstructured data.

We have the capability to work on both RMSI proprietary and client owned platforms and frameworks. With our multi-domain expertise, we can help prepare a wide range of training datasets to train, tune and validate clients AI models using multiple input sources ranging from pictures, imagery, LiDAR, video, and text to voice.

## Input Sources



## Our Solutions & Inputs



### 2D/3D Bounding Boxes

Annotating and labeling images and videos with bounding boxes around objects of choice



### Polygons

Drawing object shapes in aerial and satellite imagery for features such as rooftops and land parcels



### Semantic Segmentation

Locating objects and boundaries are defined in real world as two dimensional functions from multiple inputs



### Geo Annotation

Creating geographic models using satellite, aerial, and drone imagery to produce & curate training data



### Key Point Annotation

Label facial/skeletal features in an image using points for detecting emotions and facial recognition



### Custom Annotation

Client custom annotation for specific use cases

## Value Proposition

Our expertise in performing high-quality labeling tasks while delivering scalable and accurate annotated data using satellite imagery, lidar, aerial imagery, pictures & videos.



### High Accuracy

Human annotators and in-built quality tools providing consistent accuracy of > 98%



### AI-Based Platform

Independent AI-based platform enabling 3rd party algorithm integration



### Turn Around Time

Infrastructure and workforce reducing delivery time periods from weeks to hours



### Data Security

ISO 27001 certified along with stringent data security measures to protect your data



### Scalability

Dedicated pool of 5000+ resources offering faster scalability



### Cost Effective

Flexible pricing structure based on your requirements

## Industry Expertise

From image labeling to creating high-quality datasets for Machine Learning, we help gain actionable insights from high volumes of unstructured data so that our clients are able to drive their models on time and to budget.

RMSI helps create training datasets to build AI applications for various industries like Autonomous Vehicles, Robotics, Retail, Geospatial, Agriculture, Sports & Gaming & BigTech. We provide a complete data management, analysis, transformation, annotation, and data output solution.

RMSI has its own platform with smart labeling tools, built-in QA tooling, collaboration, a seamless UI, highly trained human workforce of 5000+ professionals. Our platform is an AI-powered suite of integrated tools for auto labeling and annotation services.

## Solution Highlights

- Powering self-driving models with highly accurate training and validation data
- Computer vision for robotics and manufacturing with annotated data
- Helping in Retail and E-commerce to revolutionize the industry
- Workflow driven end-to-end automated process, including allocation of fallouts for manual curation
- Enabling tracking progress, efficiency and quality at annotator level

# Success Stories

## Multi-Sensor Annotation & Labeling



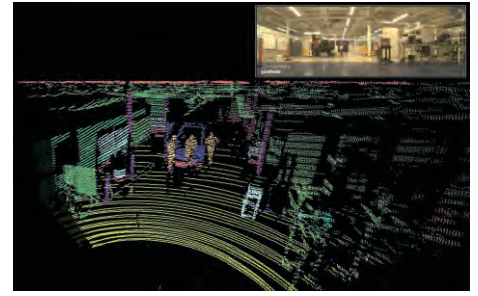
Multi-sensor (camera & LiDAR) data annotation for a leading global autonomous vehicle data provider by creating 2D & 3D Cuboid Bounding Boxes

## Geo Annotation – Satellite Imagery



Identification, annotation, and labeling changes in buildings & roads for a leading satellite image provider

## LiDAR 3D Semantic Segmentation



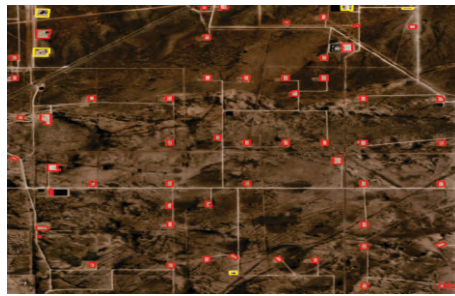
3D semantic segmentation and labeling of each point in the LiDAR point cloud data with foreground and background classes

## Image Annotation – Picture Frames



Image annotation of human faces by creating bounding boxes and labeling human expressions for a deep-tech AI company

## Geo Annotation – Satellite Imagery



Well pad segmentation and classification into defined fields for a leading satellite imagery company

## Video Annotation of Road Dynamic Objects



Video annotation of dynamic objects such as vehicles and pedestrians by creating and labeling 2D bounding boxes on a frame-by-frame basis

# About RMSI

Employee resource base of over 5000 employees

Quality certifications – CMMi level 5, ISO 27001, ISO 9001:2015, ISO 14001:2015 & 18001:2007

Track record of having implemented multiple multi year large scale data projects across the globe

Strategically located three development centres in India, and six global offices in U.S, Canada, U.K, U.A.E, & Australia



For more information, please contact [info@rmsi.com](mailto:info@rmsi.com), or visit [www.rmsi.com](http://www.rmsi.com)

