

# CAPABILITY STATEMENT

Innovative engineering solutions that empower network designs and enhance efficiency.

## ABOUT US

Telecommunications companies play a crucial role in connecting people and businesses, therefore many changes are required to remain competitive and to satisfy the customer demands. The dynamic changes in technology that the world has experienced in this decade calls for fast adaption and innovation from the telco industry as well.

RMSI is a global IT company providing geospatial, engineering and software solutions across many critical sectors including telecommunications. We provide domain specific engineering and telecommunications solutions that address the entire industry landscape. Our core competencies encompass a comprehensive range of engineering services which include undertaking detailed site assessments and surveys to optimise design outcomes.

## KEY SOLUTIONS

**1**

### Field Survey

#### Site Visit

The field survey (fielding) involves verifying the high-level network design on-site to assess physical conditions and confirm the feasibility of planned infrastructure installations. This process provides essential insights for design engineers to finalise the detailed Low-Level Design (LLD) accurately.

**2**

### Real-time Data Capture

#### R-Field Application

R-Field is a cloud-based application that allows for real-time digital data capture by field crews. The application is linked directly with back-end design databases with seamless synchronisation between mobile devices, database servers and desktop design software.

**3**

### Site Assessment

#### Drone Surveying

Drone surveying in telecom engineering enhances data collection for site assessments, including terrain mapping and line-of-sight analysis. It improves accuracy, reduces survey time, and enables safer evaluations, supporting efficient network planning and deployment.

**“Powering Digital Transformation of Next Generation Networks”**

# SOLUTIONS

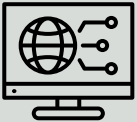
RMSI specialises in detailed field surveys to optimise network design outcomes for both fixed and mobile networks. Our committed survey teams work to identify cost-effective solutions that improve construction efficiency.

We've introduced 'R-Field,' a digital tool that enhances our field teams' mobility. This application allows survey teams to document findings electronically in real-time, providing instant access to this data for our office design teams.

For challenging terrains, we utilise Drone Surveying to capture high-resolution imagery, ensuring our design team has comprehensive visual data for precise final designs. Together, R-Field and Drone Surveying enable RMSI to offer clients a fully integrated, End-to-End network design service.

## Our Key Fielding & Survey Services

- Inspection of OSP infrastructure including cables, joints/enclosures, ducts, conduits, pits, manholes, chambers, hand holes
- Inspection of aerial infrastructure including poles
- Validation of new build activity in outside plant
- Inspection and validation of towers, rooftop and line of sight assessment
- Inspection and validation of MDU's and Commercial premise designs
- Inspection and validation of ISP infrastructure (inside plant) including exchanges, huts and communication buildings and data centers
- Detailed assessment of structural, civil and electrical engineering requirements
- Record validation inspection for DBoRs including PNI's and Digital Twin
- Assessment of environmental and 3rd party impacts

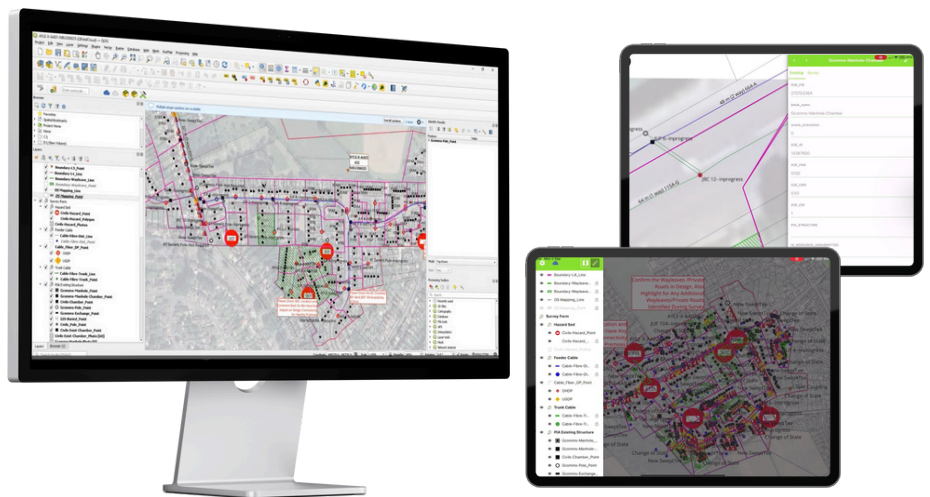


## TECHNOLOGY

R-Field | DesignX | High Resolution Cameras

# R-Field

Intelligent Integration Of  
Field & Office Design



**7,000+**  
People



**Office Locations** - Australia | North America | India | UK | Canada | UAE

To Find Out More, Get In Touch TODAY!



[www.rmsi.com](http://www.rmsi.com)



[info@rmsi.com](mailto:info@rmsi.com)

**RMSI**

