







CAPABILITY STATEMENT

Agile engineering solutions that help you modernise and transform your network to deliver next generation technologies.

ABOUT US

As the demand for high-speed, reliable connectivity continues to soar, RMSI is at the forefront of powering next-generation networks. Our end-to-end engineering solutions—from 5G wireless deployment to gigabit fiber broadband—are helping telecom providers transform infrastructure and deliver unparalleled performance. With deep expertise in network planning, design, and provisioning, we're driving digital innovation to meet today's challenges and tomorrow's opportunities.

We deliver bespoke engineering and telecom solutions tailored to navigate the entire industry landscape. Our core competencies include:

-  **Network Engineering:** Optimising and designing networks for maximum efficiency and coverage.
-  **Service Provisioning:** Streamlining the deployment of services to ensure quick, reliable access for users.
-  **Solution Development:** Crafting innovative software and systems for both wireline and wireless networks to enhance performance and connectivity.
-  **Digital Solutions:** Leveraging the latest technology to accelerate and enhance the quality of telecommunications design solutions for both fixed and mobile networks.

RMSI's approach ensures that telecommunications companies can leverage cutting-edge technology to not only meet but exceed the demands of a fast-paced digital world.

KEY DIFFERENTIATORS



Safety
Conscious
Culture



Customer
Centric



Quality
Certified



Global
Scale



Technology
Domain
Expertise



Focus on
Technology
& Innovation

At RMSI we apply a people oriented approach, simultaneously focusing on technology & innovation to achieve customer excellence.

“Powering Digital Transformation of Next Generation Networks”

KEY SERVICE SOLUTIONS

We help telco's to stay agile, manage and modernise their networks, and rapidly deploy new service solutions, delivering next generation technologies seamlessly for their customers.

1

Gigabit Fiber

Engineering Design

Full service end-to-end turnkey engineering partner, providing gigabit broadband capable networks including Fibre (FTTx) and HFC networks.

2

Wireless Network

Engineering

Comprehensive 4G & 5G network design engineering services to help you deliver network expansion and optimization goals.

3

Network & Service

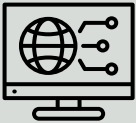
Provisioning

Delivering end-user services consistently and efficiently with our comprehensive provisioning services ensuring speedy deployment.

GIGABIT FIBRE ENGINEERING DESIGN

RMSI is a full service end-to-end turn-key engineering partner which provides gigabit broadband capable networks, with domain specific engineering solutions across all technologies including Fibre (FTTx) and HFC networks. We have over twenty years of experience in supporting our clients globally with the delivery of fixed network designs that are optimised for performance and cost of deployment.

Our safety conscious culture provides the inclusion of design controls to address hazard identification, risk management & heritage and environmental assessment. Our specialist teams have extensive experience across all leading industry platforms;



Synchronoss | SpatialNET | Esri suite | GE Smallworld | Ericsson NE | Autodesk's AutoCAD | QGIS | IRIS | Magellan | ARAMIS DT | IQGeo | IKE | Katapult | LoadData | O-Calc Pro | SPIDAcac | Bentley's Microstation | Mapinfo | MarlinDT

RMSI has also developed innovative in-house tools to improve the efficiency and quality of service deliverables. Our proprietary in-house DesignX and R-Field applications enable real-time coordination between design and field teams supporting the delivery of optimised designs.

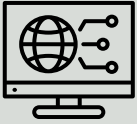
Key Gigabit Fiber Engineering Services

- Wireline network planning and design for gigabit broadband
- Construction plans including Bill of Materials & Qualities and straight line diagrams
- Permit drawings & statutory approvals processing
- Network analytics & reports
- Field surveying & network audits
- Pole loading analysis & Make-ready engineering
- As-built documentation & system updates

WIRELESS NETWORK ENGINEERING

RMSI provides comprehensive 4G & 5G network design engineering services to help you deliver your network expansion and optimization goals. Our service offering will enable you to optimize the deployment of your 4G & 5G ecosystem through new technology deployment in radio, network slicing, massive MIMO, complex beam-forming, fiber back-haul connectivity, edge, and cloud computing.

Structural, electrical and RAN engineers, certified by the local accredited bodies and skilled across industry leading load analysis and design applications:



Microstran | MSTower | OpenTower | Designer | CheckWind | CheckPole |
SPACE GASS | Blue Beam

Key Wireless Network Engineering Services

- Macro site mobile tower / monopole / rooftop design
- Greenfield / Brownfield site design
- 5G small cell design
- Homing macro-site survey & design
- BBU installation, integration, commissioning & call testing
- In-building coverage (IBC)
- Fibre back-haul connectivity engineering
- RF optimization
- 3D city RF modelling
- WiFi / IoT design

NETWORK & SERVICE PROVISIONING

RMSI helps you deliver end-user services consistently and efficiently with comprehensive provisioning services. Our global team of network and service provisioning experts are experienced in connecting customers and upgrading to next generation networks. Our services cover the full network and provisioning life-cycle, from design, pre-provisioning, provisioning and testing activities.

Network engineers skilled and certified in configuring and managing switches and routers in the OSS database across key technologies



CISCO | Ericsson | Juniper | Nokia | AlcatelLucent | Ciena | Aruba | Ribbon | Nortel
Networks | Oracle | Amdocs

Key Provisioning Services

- Order creation & management
- Design & 3rd party management
- IP / VPN / VOIP services management
- Number portability & asset management
- Cutovers & testing
- QoS management
- Technology migrations to NextGen Carrier Ethernet
- Network modernisation & optimisation
- Long-haul transit DWDM capacity management
- Management of core & distribution networks over SDN
- Design the diverse networks for Carrier Ethernet
- Migration of 4G/5G & SDN services to the NextGen platforms

KEY DIGITAL SOLUTIONS

RMSI harnesses state-of-the-art technology to elevate telecommunications design for both fixed and mobile networks. Through innovative digital solutions, we automate processes, significantly improving quality, operational efficiency, and cost-effectiveness, ensuring faster and more reliable network deployment and management for telecom operators worldwide.

1

DesignX

Design Automation

A platform-agnostic tool, supports FTTx network design with engineering tools and field data integration, ensuring consistent, cost-optimised, construction-ready designs delivered on time.

2

R-Field

Field Data Capture

A scalable, cloud-based mobile GIS solution, connects field operations with enterprise GIS, enabling real-time data capture, seamless database synchronisation, & optimised workflows with customisable layers on Google Maps.

3

marlin
digital twin

Digital Twin

A digital twin solution that unifies telecom network data with PNI for physical design and LNI for active operations, enabling faster customer activation, reduced downtime, and data-driven decisions across the lifecycle.

DesignX

Design-X is a proprietary, platform-agnostic design solution developed by RMSI. It supports FTTx and fiber upgrades in both Greenfield and Brownfield sites. The desktop application encompasses advanced features that streamline the network design process.

With the ability to integrate field survey data, generate essential design reports and plans, undertake quality checks and export directly to client enterprise systems, it ensures the delivery of optimised, construction-ready designs.

Design-X contains a suite of MapInfo-based design tools that extract data from the target system to create designs and then re-integrates them into the target system. This allows telecommunications companies and EPCs to conduct planning and design outside of the enterprise GIS, thereby reducing its load.

Key Product Features



Design & Drafting



CAD Plans Generation



Field Data Integration



BoM / BoQ Generation



Fiber Splicing



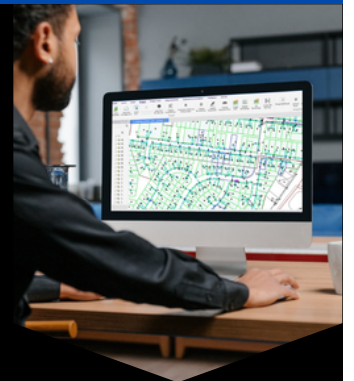
SLD Generation



Quality Control



GML Generation



R-Field

R-Field is a mobile GIS solution that connects enterprise GIS with field operations to streamline and optimise field workflow processes. It empowers field crews to view and manipulate asset information, synchronising with live databases and maximising operational efficiencies.

The solution is highly scalable, and can be customised to handle industry specific business rules and requirements, supporting field crews with rapid data collection, and seamless data integration, maintaining higher accuracy.

As a cloud-based application, it allows for real-time digital data capture by field crews. The application is linked directly with back-end design databases with seamless synchronisation between mobile devices, database servers and desktop design software. Survey design requirements are displayed in customisable layers which are shown overlaid on Google mapping.

Key Product Features



GIS Integration



In-Field Editing



GPS-Enabled Visual Mapping



Customisable Report Outputs



Online / Offline Viewing



Digital Work Allocation



In-App Image Capture



In-App Image Editing



MarlinDT revolutionises telecom network operations by addressing the inefficiencies of scattered data across teams. It integrates two powerful tools: MarlinDT PNI, which supports the design and engineering of physical network infrastructure, including OSP, splicing, construction plans, and GIS integration; and MarlinDT LNI, which enhances active network operations through capacity analysis, single-point-of-failure identification, and root-cause analysis.

As a comprehensive **digital twin** foundation, MarlinDT links all relevant network information, enabling faster customer activation, reduced downtime, and improved capacity insights. By supporting the entire network lifecycle—design, construction, operation, and decommissioning—it empowers teams with accurate data for informed, data-driven decisions, streamlining operations across departments.

Key Product Features



Modular & Scalable

solution for a smooth transition towards your digital twin



Unified Data Model

supports PNI and LNI for a complete GIS and Telecom inventory



Automation Catalyst

future-proofing your network operations



Streamlined Workflows

enhance the efficiency and accuracy



Powerful API

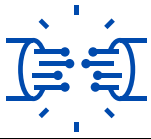
to enable the full PNI, LNI, OSS, BSS eco-system



Enterprise Wide

Visibility of your network through the ArcGIS Foundation

SUCCESS STORIES



Fixed Network

Enabling gigabit broadband capability through the delivery of planning & design engineering services for Australia's national broadband network rollout

Delivering design services to upgrade Copper & HFC (hybrid fibre coaxial) networks for leading American telecommunication providers

Providing end-to-end planning and design engineering services to multiple UK based telecommunications companies deploying gigabit fibre connectivity



Wireless Network

Wireless engineering services encompassing structural, electrical and RAN designing for deployment of 5G network for a leading Australian operator

Providing engineering services for mobile network modernisation including transmission and capacity upgrades

Wireless Tower Designing for 5G network deployment for a leading mobile operator in UK



Network Provisioning

Network design and provisioning engineering services for customer orders for a leading telecommunications company, Australia

Supporting a next-gen transport modernisation program with design engineering & provisioning services to upgrade fixed and mobile core, distribution and access networks in Australia

OPERATING MODELS

RMSI is a global company with a client base spread across 30 countries. This has enabled us to develop a variety of flexible operating models to suit our client's needs based on size, cost & timeframe.



ON-SITE

Resources work directly out of the client's office using the client's equipment

\$

Time & Materials



ON-SHORE

100% of allocated resources work directly out of the RMSI on-shore secure facility

\$

Time & Materials
OR SoR



OFF-SHORE

100% of allocated resources work directly out of the RMSI offshore secure facility

\$

Time & Materials
OR SoR



HYBRID

Customised delivery model for optimised cost and local client engagement

\$

Time & Materials
OR SoR

7,000+
People

PARTNERS:



esri Partner Network Gold



marlin digital twin

Office Locations - Australia | North America | India | UK | Canada | UAE

To Find Out More, Get In Touch TODAY!



www.rmsi.com



info@rmsi.com

RMSI

