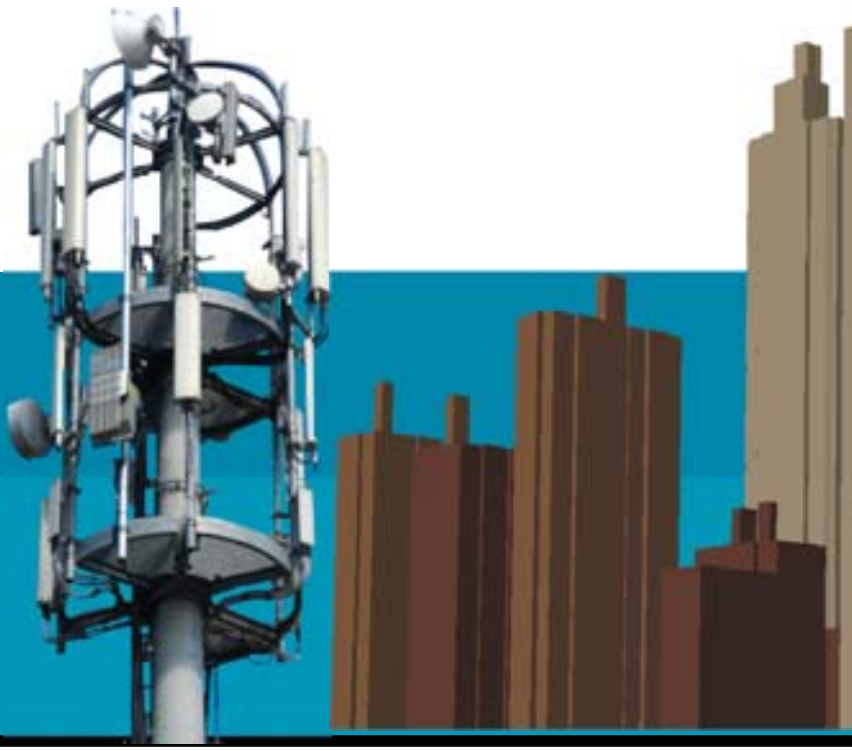


Wireless Telecommunications

Our solutions can be used for both fixed wireless and mobile wireless networks



RMSI has been in the business of delivering mapping solutions that meet the needs of RF planners and wireless network designers around the world, for over 15 years. The company possesses one of the largest international inventories of off-the-shelf geodata products in the industry.

RMSI offers geodata solutions for both, fixed wireless (WLL, LMDS) and mobile wireless (GSM, CDMA, TDMA, UMTS and WiMAX) networks. Our solutions can be used for multiple wireless applications, ranging from preliminary regional network planning and coverage analysis to micro-cell design, line-of-sight analysis, network expansion, and site acquisition.

RMSI has also established a leadership position in the 3D data market for mobile wireless technologies. In addition to geo-data, RMSI has extensive experience in developing customized software solutions ranging from simple desktop viewer applications to large, scalable and secure web-enabled systems for enterprise and public portals.

RMSI Differentiators

- Largest repository of off-the-shelf data products
- Pioneers and market leaders in optimized 3D databases
- Global partnering agreements with telecom majors
- Delivery in all major file formats

Data Packages

- 3D Building Data Packages
- 2.5D Data Package
- City Data Packages
- Regional Data Packages

3D Building Data Package

- Resolution : 1 meter
- Coverage: Client specified high dense urban sprawls
- Layers: Digital Terrain Model (DTM), Digital Surface Model (DSM), Digital Building Height Model (DHM), Vegetation Model, 2D Linear Feature, Clutter, Ortho image

Optimized 3D Building Data Package

- Resolution : 5 meters
- Coverage: Client specified high dense urban sprawls, CBD areas
- Layers: DTM, DHM, Vectors, Clutter, Ortho image

2.5D Data Package

- Resolution : 5 meters
- Coverage: Client specified urban sprawls
- Layers: DTM, Vectors, Average Height Based Clutter, Orthoimage

City Data Packages

- Resolution : 5 - 10 meters
- Coverage: Client specified dense urban sprawls
- Layers: DTM, Vectors, Clutter, Ortho image

Optimized City Data Package

- Resolution : 20 meters
- Coverage: Specified city areas
- Layers: DTM, Vectors, Clutter

Regional Data Package

- Resolution : 30 - 100 meters
- Coverage: Complete country or client specified regions
- Layers: DTM, Clutter , Vector, Text